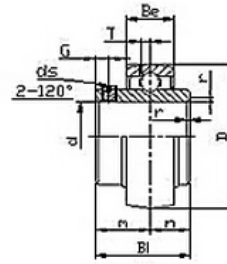
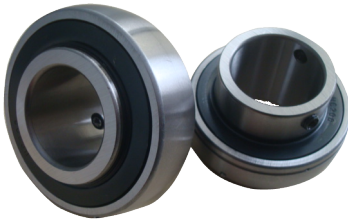


UC300 Series



select	Inquiry	Bearing No.	Shaft Dia d		Dimensions(mm)									Basic Load Rating (kg)	Basic Static Load Rating (kg)	Weight (kg)
			(in)	(mm)	D	Bi	Be	r	n	m	G	ds	T			
UC305-14	7/8		62	38	21	2	15	23	6	1/4-28	6.1	1760	1160	0.39		
UC305-15	15/16		62	38	21	2	15	23	6	1/4-28	6.1	1760	1160	0.37		
UC305-16	1		62	38	21	2	15	23	6	1/4-28	6.1	1760	1160	0.35		
UC305		25	62	38	21	2	15	23	6	M6x0.75	6.1	1760	1160	0.35		
UC306-18	1-1/8		72	43	23	2	17	26	6	1/4-28	6.7	2119	1445	0.6		
UC306-19	1-3/16		72	43	23	2	17	26	6	1/4-28	6.7	2119	1445	0.54		
UC306		30	72	43	23	2	17	26	6	M6x0.75	6.7	2119	1445	0.56		
UC307-20	1-1/4		80	48	25	2.5	19	29	8	5/16-24	7.4	2620	1830	0.81		
UC307-21	1-5/16		80	48	25	2.5	19	29	8	5/16-24	7.4	2620	1830	0.79		
UC307-22	1-3/8		80	48	25	2.5	19	29	8	5/16-24	7.4	2620	1830	0.75		
UC307		35	80	48	25	2.5	19	29	8	M8x1	7.4	2620	1830	0.75		
UC308-24	1-1/2		90	52	27	2.5	19	33	10	3/8-24	8.2	3200	2280	1.07		
UC308-25	1-9/16		90	52	27	2.5	19	33	10	3/8-24	8.2	3200	2280	1		
UC308		40	90	52	27	2.5	19	33	10	M10x1.25	8.2	3200	2280	1		
UC309-26	1-5/8		100	57	30	2.5	22	35	10	3/8-24	9	4150	3060	1.39		
UC309-27	1-11/16		100	57	30	2.5	22	35	10	3/8-24	9	4150	3060	1.33		
UC309-28	1-3/4		100	57	30	2.5	22	35	10	3/8-24	9	4150	3060	1.28		
UC309		45	100	57	30	2.5	22	35	10	M10x1.25	9	4150	3060	1.26		
UC310-30	1-7/8		110	61	32	3	22	39	12	7/16-20	10	4850	3640	1.75		
UC310-31	1-15/16		110	61	32	3	22	39	12	7/16-20	10	4850	3640	1.67		
UC310		50	110	61	32	3	22	39	12	M12x1.5	10	4850	3640	1.65		
UC311-32	2		120	66	34	3	25	41	12	7/16-20	10.7	5620	4280	2.3		
UC311-34	2-1/2		120	66	34	3	25	41	12	7/16-20	10.7	5620	4280	2.2		
UC311-35	2-3/16		120	66	34	3	25	41	12	7/16-20	10.7	5620	4280	2		
UC311		55	120	66	34	3	25	41	12	M12x1.5	10.7	5620	4280	2.1		

UC300 Series

UC312-36	2-1/4		130	71	36	3.5	26	45	12	7/16-20	11.5	6420	4960	2.8
UC312-38	2-3/8		130	71	36	3.5	26	45	12	7/16-20	11.5	6420	4960	2.6
UC312-39	2-7/16		130	71	36	3.5	26	45	12	7/16-20	11.5	6420	4960	2.6
UC312		60	130	71	36	3.5	26	45	12	M12x1.5	11.5	6420	4960	2.5
UC313-40	2-1/2		140	75	38	3.5	30	45	12	7/16-20	12.2	7370	5780	3.46