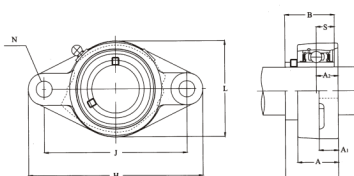


# UCFL Series



select	Inquiry	Unit No.	Bearing No.	Housing No.	Shaft Dia		Boundary dimensions(mm)										Bolt Size	Mass(Kg)
					in.	mm	a	e	i	g	l	s	b	z	Bi	n		
UCFL201-8	UC201-8	FL204	1/2	-	113	90	15	11	25.5	12	60	33.3	31	12.7	3/8	0.5		
UCFL202-10	UC202-10	FL204	5/8	-	113	90	15	11	25.5	12	60	33.3	31	12.7	3/8	0.5		
UCFL204	UC204	FL204	-	20	113	90	15	11	25.5	12	60	33.3	31	12.7	M10	0.5		
UCFL204-12	UC204-12	FL204	3/4	-	113	90	15	11	25.5	12	60	33.3	31	12.7	3/8	0.5		
UCFL205	UC205	FL205	-	25	130	99	16	13	27	16	68	35.7	34	14.3	M14	0.6		
UCFL205-14	UC205-14	FL205	7/8	-	130	99	16	13	27	16	68	35.7	34	14.3	1/2	0.6		
UCFL205-15	UC205-15	FL205	15/16	-	130	99	16	13	27	16	68	35.7	34	14.3	1/2	0.6		
UCFL205-16	UC205-16	FL205	1	-	130	99	16	13	27	16	68	35.7	34	14.3	1/2	0.6		
UCFL206	UC206	FL206	-	30	148	117	18	13	31	16	80	40.2	38.1	15.9	M14	0.9		
UCFL206-17	UC206-17	FL206	1-1/16	-	148	117	18	13	31	16	80	40.2	38.1	15.9	1/2	0.9		
UCFL206-18	UC206-18	FL206	1-1/8	-	148	117	18	13	31	16	80	40.2	38.1	15.9	1/2	0.9		
UCFL206-19	UC206-19	FL206	1-3/16	-	148	117	18	13	31	16	80	40.2	38.1	15.9	1/2	0.9		
UCFL206-20	UC206-20	FL206	1-1/4	-	148	117	18	13	31	16	80	40.2	38.1	15.9	1/2	0.9		
UCFL207	UC207	FL207	-	35	161	130	19	15	34	16	90	44.4	42.9	17.5	M14	1.2		
UCFL207-20	UC207-20	FL207	1-1/4	-	161	130	19	15	34	16	90	44.4	42.9	17.5	1/2	1.2		
UCFL207-21	UC207-21	FL207	1-5/16	-	161	130	19	15	34	16	90	44.4	42.9	17.5	1/2	1.2		
UCFL207-22	UC207-22	FL207	1-3/8	-	161	130	19	15	34	16	90	44.4	42.9	17.5	1/2	1.2		
UCFL207-23	UC207-23	FL207	1-7/16	-	161	130	19	15	34	16	90	44.4	42.9	17.5	1/2	1.2		
UCFL208	UC208	FL208	-	40	175	144	21	15	36	16	100	51.2	49.2	19	M14	1.6		
UCFL208-24	UC208-24	FL208	1-1/2	-	175	144	21	15	36	16	100	51.2	49.2	19	1/2	1.6		
UCFL208-25	UC208-25	FL208	1-9/16	-	175	144	21	15	36	16	100	51.2	49.2	19	1/2	1.6		
UCFL209	UC209	FL209	-	45	188	148	22	16	38	19	108	52.2	49.2	19	M16	1.9		
UCFL209-26	UC209-26	FL209	1-5/8	-	188	148	22	16	38	19	108	52.2	49.2	19	5/8	1.9		
UCFL209-27	UC209-27	FL209	1-11/16	-	188	148	22	16	38	19	108	52.2	49.2	19	5/8	1.9		
UCFL209-28	UC209-28	FL209	1-3/4	-	188	148	22	16	38	19	108	52.2	49.2	19	5/8	1.9		
UCFL210	UC210	FL210	-	50	197	157	22	16	40	19	116	54.6	51.6	19	M16	2.2		
UCFL210-30	UC210-30	FL210	1-7/8	-	197	157	22	16	40	19	116	54.6	51.6	19	5/8	2.2		
UCFL210-31	UC210-31	FL210	1-15/16	-	197	157	22	16	40	19	116	54.6	51.6	19	5/8	2.2		
UCFL210-32	UC210-32	FL210	2	-	197	157	22	16	40	19	116	54.6	51.6	19	5/8	2.2		
UCFL211	UC211	FL211	-	55	224	184	25	18	43	19	130	58.4	55.6	22.2	M16	3.1		