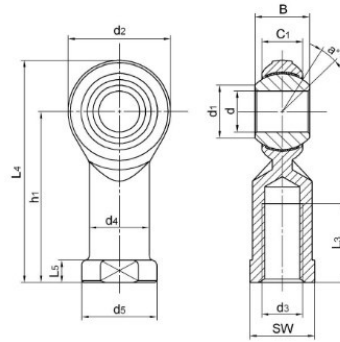


SPHS..EC Series



select	Inquiry	Bearing Designation	Dimensions mm											Load Rating (KN)		Weight ≈Kg		
			d	H7	B	C1	d1	d2	d3-6H	h1	L3	(L4)	L5	d4	d5		sw	Ball Diameter
SPHS5EC	5	8	6	7.7	16	M5	27	11	35	4	11	9	11.11	13	3.3	6.2	0.016	
SPHS6EC	6	9	6.75	8.9	18	M6	30	13	39	5	13	11	12.7	13	4.7	7.8	0.025	
SPHS8EC	8	12	9	10.3	22	M8	36	16	47	5	16	14	15.87	14	7.7	13.2	0.043	
SPHS10EC	10	14	10.5	12.9	26	M10	43	20	56	6.5	19	17	19.05	13	10.4	17.3	0.072	
SPHS12EC	12	16	12	15.4	30	M12	50	23	65	6.5	22	19	22.22	13	13.5	22.7	0.107	
SPHS14EC	14	19	13.5	16.8	34	M14	57	27	74	8	25	22	25.4	16	17.2	28.2	0.16	
SPHS16EC	16	21	15	19.3	38	M16	64	32	83	8	27	22	28.58	15	21	35.1	0.21	
SPHS18EC	18	23	16.5	21.8	42	M18X1.5	71	35	92	10	31	27	31.75	15	25	43.2	0.295	
SPHS20EC	20	25	18	24.3	46	M20x1.5	77	39	100	10	34	30	34.92	14	29.8	50.3	0.38	
SPHS22EC	22	28	20	25.8	50	M22x1.5	84	42	109	12	37	32	38.1	15	36.2	63.9	0.49	