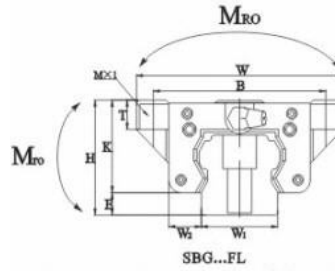
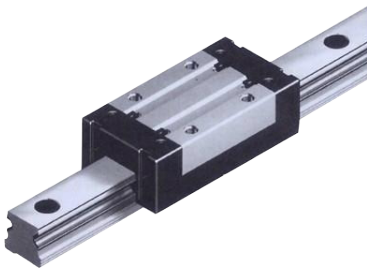


SBG...FL SBG..SL SBS..SL



select	Inquiry Type	Mounting Dimensions				Block Dimensions										Rail Size			Load capacity					Weight			
		Height(H)	E	W2	Width(W)	Length(L)	Mounting tab hole(BxJ)	Mounting tab hole(MxL)	L1	J1	K	T	Nipple Mounting Hole	Nipple(T1)	Nipple(N)	Width(W1)	Height(H1)	Pitch(F)	Bolt Hole(dxDxh)	G	Max.length Of rail Lomax	Dynamic C(kgf)	Stationary Co(kgf)	Stationary moment(kgf.M) MRO	Stationary moment(kgf.M) MPO	Stationary moment(kgf.M) MRO	bearing rail (kgf)
SBG15FL	24	3	16	47	56.5	38*30	M5*11	38.8	4.4	21	7.2	3hole	4.25	5.5	15	15	60	4.5*7.5*5.3	20	1600	850	1370	7	5	5	0.12	1.5
SBG20FL	30	3.6	21.5	63	74	53*40	M6*10	50.8	5.4	26.5	9	M6*0.75	4.45	12	20	17.5	60	6*9.5*8.5	20	3040	1400	2420	22	18	18	0.3	2.16
SBG25FL	36	5.2	23.5	70	83	57*45	M8*16	59.5	7.25	31.5	10	M6*0.75	5.95	12	23	21.8	60	7*11*9	20	4480	2030	3500	36	32	31	0.46	3.14
SBG30FL	42	5.5	31	90	98	72*52	M10*18	70.4	9.6	36.5	12	M6*0.75	8.5	12	28	25	80	9*14*12	20	4440	2855	4770	50	36	36	0.82	4.5
SBG35FL	48	7.5	33	100	109.5	82*62	M10*20	80.4	9.2	40.5	13	M6*0.75	9.5	12	34	29	80	9*14*12	20	4440	3800	6230	96	75	75	1.22	6.3
SBG45FL	60	8	37.5	120	139	100*90	M12*24	98	9	52	15	PT1/8	10.5	16	45	38	105	14*20*17	22.5	4450	6120	9750	216	170	168	2.02	10.9
SBG55FL	70	10.5	43.5	140	163	116*95	M14*28	118	11.5	59.5	17	PT1/8	12	16	53	45	120	16*23*20	30	4480	9020	13970	367	293	288	4.5	14.9
SBG65FL	90	17.5	53.5	170	186	142*110	M16*24	147	18.5	72.5	23	PT1/8	15	16	63	58.5	150	18*26*22	35	4390	14380	21900	629	493	484	6.24	21.3
SBG15SL	28	3	9.5	34	56.5	26*26	M4*5	38.8	6.4	25	6	3hole	8.25	5.5	15	15	60	4.5*7.5*5.3	20	1600	840	1370	7	5	5	0.14	1.5
SBG20SL	30	3.6	12	44	74	32*36	M5*6	50.8	7.4	26.5	8	M6*0.75	4.45	12	20	17.5	60	6*9.5*8.5	20	3040	1400	2420	22	18	18	0.36	2.16
SBG25SL	40	5.2	12.5	48	83	35*35	M6*8	59.5	12.25	35.5	8	M6*0.75	9.95	12	23	21.8	60	7*11*9	20	4480	2020	3500	36	32	31	0.44	3.14
SBG30SL	45	5.5	16	60	98	40*40	M8*10	70.4	15.2	39.5	8	M6*0.75	11.5	12	28	25	80	9*14*12	20	4440	2360	3970	50	36	36	0.72	4.5
SBG35SL	55	7.5	18	70	109.5	50*50	M8*12	80.4	15.2	47.5	10	M6*0.75	16.5	12	34	29	80	9*14*12	20	4440	3800	6230	96	75	73	1.14	6.3
SBG45SL	70	8	20.5	86	139	60*60	M10*17	98	19	62	15	PT1/8	20.5	16	45	38	105	14*20*17	22.5	4450	6120	9750	216	170	168	2	10.9
SBG55SL	80	10.5	23.5	100	163	75*75	M12*18	118	21.5	69.5	18	PT1/8	22	16	53	45	120	16*23*20	30	4480	9020	13970	367	293	288	4.2	14.9
SBG65SL	90	17.5	31.5	126	186	76*70	M16*20	147	38.5	72.5	23	PT1/8	15	16	63	58.5	150	18*26*22	35	4390	14380	21900	629	493	484	6.15	21.3