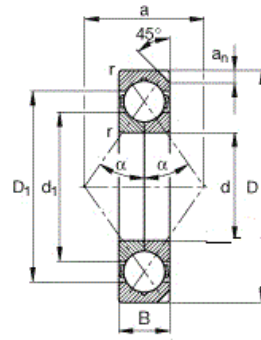
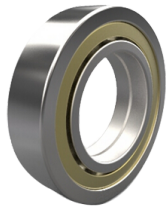


Four Point Angular Contact Ball Bearings



select	Inquiry	Bearing Designation	Dimension [mm]			Basic load ratings (kN)		Speed ratings (rpm)		Weight (Kg)
			d	D	B	Cr	Cor	Grease	Oil	
QJF209	45	100	19	40.0	37.8	5300	7000	0.43		
QJF211	55	100	21	50.2	50.2	4500	6000	0.76		
QJ310	-	100	27	85.0	8.0	5000	6700	1.33		
QJ211MB.401C	55	100	21	1.5	66.3	55	7100	0.597		
QJF310	-	110	27	73.5	72.2	4500	6000	1.2		
QJF212	60	110	22	62.8	63.8	4300	5600	1.0		
QJ210	-	110	20	55.5	44.8	5000	6700	0.52		
QJ311	-	110	29	115.0	86.5	4000	5300	1.48		
QJF311	-	120	29	86.5	85.0	4000	5300	1.48		
QJF312	-	120	31	93.5	93.2	3800	5000	2.2		
QJF213	65	120	23	65.2	67.8	3800	5000	1.12		
QJ211	-	120	21	71.0	62.0	5300	7000	0.769		
QJ214	-	125	24	105.0	102.0	3400	4500	2.32		
QJ212	-	130	22	8.1	71.0	4800	6300	0.99		
QJ215	75	130	25	108.0	98.0	4000	5300	1.45		
QJF313	-	140	23	90.0	83.0	4300	5600	1.2		
QJ1018	90	140	24	130	102	3200	4300	-		
QJ314	70	150	35	98.0	91.5	4300	5600	2.32		
QJ6217	85	150	28	2	80.7	56.9	4800	1.8		
QJ6824	120	150	16	1	43.35	49.35	4100	3		

Four Point Angular Contact Ball Bearings

QJ218	-	160	30	150	165	3200	4300	2.91
QJ1022	110	170	28	195	150	3000	4000	-
9122KL	110	170	14	2	106	109	3800	2.65
QJ317	85	180	41	188	210	2600	3600	5.5
QJ220	100	180	34	192	212	2800	3800	4.05
QJ1024	120	180	28	208	152	2200	3200	-
QJ318	-	190	43	228	238	2400	3400	6.41
QJ222	-	200	38	245	255	2400	3400	5.76
QJ1026	130	200	33	230	202	2000	2700	-
QJ1028	140	210	33	242	205	1900	2600	-