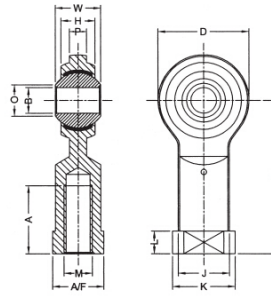


NHS Seres



select Inquiry	Model Number	Main Dimensions (Mm)											Thread M	Permit of Static load Angel	Weight (g)	
		B	W	O	H	D	F	K	J	L	A/F	A				
NHS 5 R/L H.	5	8	7.7	5.5	16	27	11	9	3	9	12	5X0.8	13	5.7	1.5	16
NHS 6 R/L H.	6	9	8.9	6	18	30	13	10	3.3	11	14	6X1.0	13	7	2	24
NHS 8F R/L H.	8	12	10.4	8	22	36	16	12.5	4.5	14	17	8X1.0	13	11.6	3.5	41
NHS 8 R/L H.	8	12	10.4	8	22	36	16	12.5	4.5	14	17	8X1.25	13	11.6	3.5	41
NHS 10F R/L H.	10	14	12.9	10	26	43	19	15	5.5	17	21	10X1.25	13	14.5	4.8	70
NHS 10 R/L H.	10	14	12.9	10	26	43	19	15	5.5	17	21	10X1.5	13	14.5	4.8	70
NHS 12F R/L H.	12	16	15.4	11	30	50	22	17.5	6	19	24	12X1.25	13	17	6.5	104
NHS 12 R/L H.	12	16	15.4	11	30	50	22	17.5	6	19	24	12X1.75	13	17	6.5	104
NHS 14F R/L H.	14	19	16.8	12	34	57	25	20	7	21	27	14X1.5	15	24	8.2	158
NHS 14 R/L H.	14	19	16.8	12	34	57	25	20	7	21	27	14X2.0	15	24	8.2	158

NHS Seres

NHS 16F R/L H.	16	21	19.3	13	38	64	27	22	7.5	22	33	16X1.5	15	28.5	10	258
NHS 16 R/L H.	16	21	19.3	13	38	64	27	22	7.5	22	33	16X2.0	15	28.5	10	200
NHS 18 R/L H.	18	23	21.8	15	42	71	31	25	8.5	27	36	18X1.5	15	35	12.5	288
NHS 20 R/L H.	20	25	24.3	16	46	77	34	27.5	9	30	40	20X1.5	15	40	15	372
NHS 22 R/L H.	22	28	25.8	18	50	84	37	30	10	32	43	22X1.5	15	52	18	475
NHS 25 R/L H.	25	31	29.6	20	56	94	42	33.5	12	36	48	24X2.0	15	60	23	680
NHS 30 R/L H.	30	37	34.8	24	67	110	50	40	15	41	56	30X2.0	15	81	30	1020