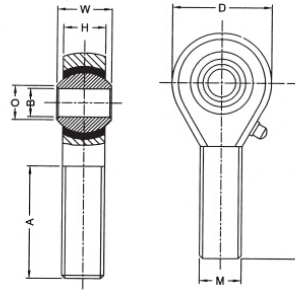


POS Series



select Inquiry	Model Number	Main Dimensions (Mm)											Permit of Static load Weight Angel			
		B	W	O	H	D	F	K	J	L	A/F	A	Thread M	α	Radial Angel (g)	
POS 5 R/L H.	5	8	7.7	6	16	33	-	-	-	-	20	5X0.8	13	5.7	1.5	14
POS 6 R/L H.	6	9	8.9	7	18	36	-	-	-	-	22	6X1.0	13	7	2	21
POS 8F R/L H.	8	12	10.4	9	22	42	-	-	-	-	25	8X1.0	13	11.6	3.5	34
POS 8 R/L H.	8	12	10.4	9	22	42	-	-	-	-	25	8X1.25	13	11.6	3.5	34
POS 10F R/L H.	10	14	12.9	11	26	48	-	-	-	-	29	10X1.25	13	14.5	4.8	58
POS 10 R/L H.	10	14	12.9	11	26	48	-	-	-	-	29	10X1.5	13	14.5	4.8	58
POS 12F R/L H.	12	16	15.4	12	30	54	-	-	-	-	33	12X1.25	13	17	6.5	92
POS 12 R/L H.	12	16	15.4	12	30	54	-	-	-	-	33	12X1.75	13	17	6.5	92
POS 14F R/L H.	14	19	16.8	14	34	60	-	-	-	-	36	14X1.5	15	24	8.2	135

POS Series

POS 14 R/L H.	14	19	16.8	14	34	60	-	-	-	-	36	14X2.0	15	24	8.2	135
POS 16F R/L H.	16	21	19.3	15	38	66	-	-	-	-	40	16X1.5	15	28.5	10	205
POS 16 R/L H.	16	21	19.3	15	38	66	-	-	-	-	40	16X2.0	15	28.5	10	205
POS 18 R/L H.	18	23	21.8	17	42	72	-	-	-	-	44	18X1.5	15	35	12.5	285
POS 20 R/L H.	20	25	24.3	18	46	78	-	-	-	-	47	20X1.5	15	40	15	370
POS 22 R/L H.	22	28	25.8	20	50	84	-	-	-	-	51	22X1.5	15	52	18	475
POS 25 R/L H.	25	31	29.6	22	56	94	-	-	-	-	57	24X2.0	15	60	23	650
POS 30 R/L H.	30	37	34.8	26	67	110	-	-	-	-	66	30X2.0	15	81	30	1070