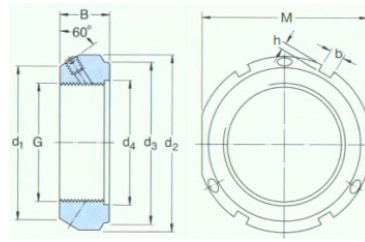
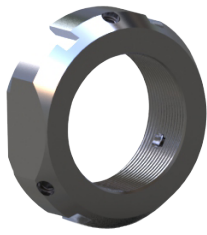


KMT precision lock nut with locking pin



select	Inquiry	Designation		Sunk screw (Nm)		Dimensions(mm)								Nuts required for dismounting	Breakout torque(Nm)	Weight kg
		Lock nut	Appropriate hook spanners	Dimensions	Advised breakout torque	G	d1	d2	d3	d4	B	b	h	M		
KMT0	HN2/3	M5	4,5	M 10×0,75	21	28	23	11	14	4	2	24	35	15	0,045	
KMT1	HN3	M5	4,5	M 12×1	23	30	25	13	14	4	2	27	40	18	0,050	
KMT2	HN4	M5	4,5	M 15×1	26	33	28	16	16	4	2	30	60	20	0,075	
KMT3	HN4	M6	8	M 17×1	29	37	33	18	18	5	2	34	80	25	0,10	
KMT4	HN5	M6	8	M 20×1	32	40	35	21	18	5	2	36	90	35	0,11	
KMT5	HN5	M6	8	M 25×1,5	36	44	39	26	20	5	2	41	130	45	0,13	
KMT6	HN6	M6	8	M 30×1,5	41	49	44	32	20	5	2	46	160	55	0,16	
KMT7	HN7	M6	8	M 35×1,5	46	54	49	38	22	5	2	50	190	65	0,19	
KMT8	HN8/9	M8	18	M 40×1,5	54	65	59	42	22	6	2,5	60	210	80	0,30	
KMT9	HN9/10	M8	18	M 45×1,5	60	70	64	48	22	6	2,5	65	240	95	0,33	
KMT10	HN10/11	M8	18	M 50×1,5	64	75	68	52	25	7	3	70	300	115	0,40	
KMT11	HN12/13	M8	18	M 55×2	74	85	78	58	25	7	3	80	340	225	0,54	
KMT12	HN13	M8	18	M 60×2	78	90	82	62	26	8	3,5	85	380	245	0,61	
KMT13	HN14	M8	18	M 65×2	83	95	87	68	28	8	3,5	90	460	265	0,71	
KMT14	HN15	M8	18	M 70×2	88	100	92	72	28	8	3,5	95	490	285	0,75	
KMT15	HN15/16	M8	18	M 75×2	93	105	97	77	28	8	3,5	100	520	305	0,80	
KMT16	HN16/17	M8	18	M 80×2	98	110	100	83	32	8	3,5	-	620	325	0,90	
KMT17	HN17/18	M10	35	M 85×2	107	120	110	88	32	10	4	-	650	660	1,15	
KMT18	HN18/19	M10	35	M 90×2	112	125	115	93	32	10	4	-	680	720	1,20	
KMT19	HN19/20	M10	35	M 95×2	117	130	120	98	32	10	4	-	710	780	1,25	
KMT20	HN20	M10	35	M 100×2	122	135	125	103	32	10	4	-	740	840	1,30	
KMT22	HN22	M10	35	M 110×2	132	145	134	112	32	10	4	-	800	960	1,45	
KMT24	TMFN23-30	M10	35	M 120×2	142	155	144	122	32	10	4	-	860	1080	1,60	
KMT26	TMFN23-30	M10	35	M 130×2	152	165	154	132	32	12	5	-	920	1200	1,70	
KMT28	TMFN23-30	M10	35	M 140×2	162	175	164	142	32	14	6	-	980	1320	1,80	
KMT30	TMFN23-30	M10	35	M 150×2	172	185	174	152	32	14	6	-	1040	1440	1,95	
KMT32	TMFN30-40	M10	35	M 160×3	182	195	184	162	32	14	6	-	1100	1600	2,10	
KMT34	TMFN30-40	M10	35	M 170×3	192	205	192	172	32	14	6	-	1160	1750	2,20	
KMT36	TMFN30-40	M10	35	M 180×3	202	215	204	182	32	16	7	-	1220	1900	2,30	
KMT38	TMFN30-40	M10	35	M 190×3	212	225	214	192	32	16	7	-	1280	2050	2,40	