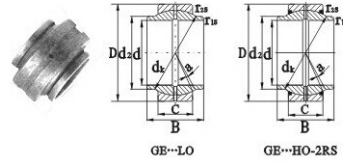
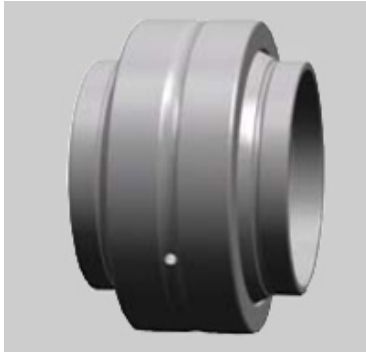


# GE...HO-2RS



select	Inquiry Designation		Dimensions (mm)								$\alpha \approx$	Load Ratings (KN)		Weight (kg)
			d	d <sub>2 min</sub>	D	B	C	dk	r1s min	r2s min		C	CO	
GE20LO	20	25	35	20	12	29	0.3	0.3	4	30	146	0.07		
GE25LO	25	30	42	25	16	35.5	0.6	0.6	4	48	240	0.12		
GE32LO	32	38	52	32	18	44	0.6	1	4	67	335	0.2		
GE40LO	40	46	62	40	22	53	0.6	1	4	100	500	0.34		
GE50LO	50	57	75	50	28	66	0.6	1	4	156	780	0.56		
GE63LO	63	71.5	95	63	36	83	0.1	1	4	255	1270	1.2		
GE70LO	70	79	105	70	40	92	1	1	4	315	1560	1.7		
GE80LO	80	91	120	80	45	105	1	1	4	400	2000	2.4		
GE20HO-2RS	20	24	35	24	12	29	0.2	0.3	3	30	146	0.057		
GE25HO-2RS	25	29	42	29	16	35.5	0.2	0.6	3	48	240	0.1		
GE30HO-2RS	30	34.2	47	30	18	40.7	0.2	0.6	3	62	310	0.14		
GE35HO-2RS	35	40	55	35	20	47	0.3	1	3	80	400	0.24		
GE40HO-2RS	40	45	62	38	22	53	0.3	1	3	100	500	0.29		
GE45HO-2RS	45	51.5	68	40	25	60	0.3	1	3	127	640	0.43		
GE50HO-2RS	50	56.5	75	43	28	66	0.3	1	3	156	780	0.54		
GE60HO-2RS	60	67.7	90	54	36	80	0.3	1	3	245	1220	1.1		
GE70HO-2RS	70	78	105	65	40	92	0.3	1	3	315	1560	1.6		
GE80HO-2RS	80	90	120	74	45	105	0.3	1	3	400	2000	2.4		