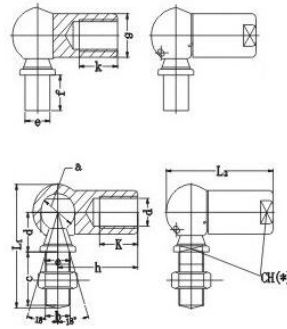
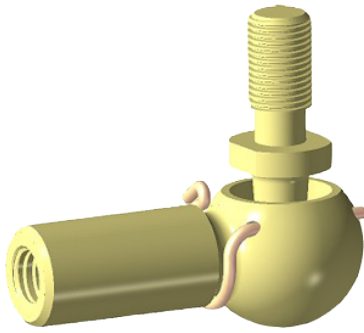


# SQG... Series



select	Inquiry	Designation	Dimensions [mm]											$\alpha^\circ \approx$	Static load ratings (KN)	Weight(Kg)
			d1	d2	d3	l1	l2	l3	S	L1	D1	D3				
SQG5	M5	8	8	10.2	10.2	9	7	22	8	12.8	10	2.2	0.015			
SQG6	M6	10	10	11.5	12.5	11	8	25	10	14.8	15	3.5	0.025			
SQG8	MR	14	13	14	16.5	13	11	30	13	193	15	6.6	0.053			
SQG10	M10	16	16	15.5	20	16	13	35	16	24	15	10	0.104			
SQG12	M12	16	16	15.5	20	16	13	35	16	24	15	16	0.104			
SQG14	M14×1.5	19	19	21.5	28	20	16	45	22	30	15	19	0.221			
SQG14/B5	M14×2	19	19	21.5	28	20	16	45	22	30	15	26	0.221			