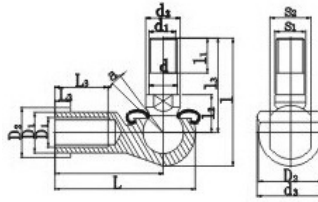
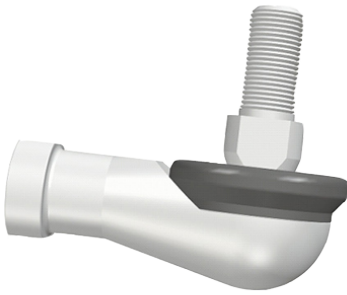


SQY...-RS Series



SQ...-RS (SQ...-RS-1)

select	Inquiry	Designation	Dimensions [mm]																Static load ratings (KN)	Weight(Kg)
			d1	d2	d3	l	l1	l2	l3	S1	L	L1	L2	L3	D1	D2	D3	S2		
SQY4-RS	10-32	9	19	29	8	10	21	7	35	27	4	14	9	11	16	9	25	22	0.026	
SQY6-RS	1/4-28	10	20	35.5	11	11	26	8	40	30.5	5	14	10	13	19	11	25	3.5	0.039	
SQY7-RS	5/16-24	12	24	42.5	12	14	31	10	48	36.5	5	17	12.5	16	23	14	25	6.6	0.068	
SQY9-RS	3/8-24	14	30	50.5	15	17	37	11	57	43.5	6.5	21	15	19	27	17	25	10	0.112	
SQY11-RS	7/16-20	17	32	57.5	17	19	42	15	66	50.5	6.5	25	17.5	22	31	19	25	16	0.164	
SQY12-RS	1/2-20	19	38	73.5	22	21.5	56	17	75	57.5	8	26	20	25	35	22	25	19	0.254	
SQY15-RS	5/8-18	22	44	79.5	23	23.5	60	19	84	64.5	8	32	22	27	39	22	20	26	0.336	
SQY19-RS	3/4-16	23	45	90	25	26.5	68	20	93	71	10	34	25	31	44	27	20	33	0.464	