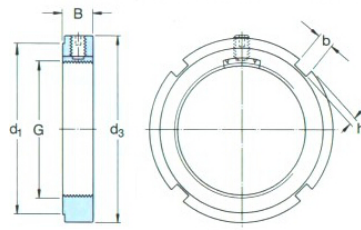
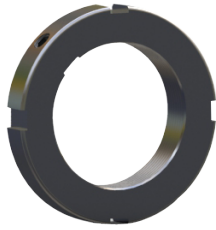


# KMK lock nut with inner locking pin



select	Inquiry	Designation		Sunk screw (Nm)	Advised breakout torque	Dimensions(mm)						Nuts required for dismounting	Breakout torque(Nm)	Weight kg
		Lock nut	Appropriate hook spanners	Dimensions		G	d1	d3	B	b	h	Sta		
KMK0	-	M5	4	M 10×0,75	16	20	9	3	2	9,8	6	0,016		
KMK1	HN1	M5	4	M 12×1	18	22	9	3	2	11,8	9	0,018		
KMK2	HN2	M5	4	M 15×1	21	25	9	4	2	14,6	12	0,021		
KMK3	HN3	M5	4	M 17×1	24	28	9	4	2	19,6	13	0,027		
KMK4	HN4	M5	4	M 20×1	28	32	9	4	2	24	16	0,030		
KMK5	HN5	M5	4	M 25×1,5	34	38	9	5	2	31,5	29	0,030		
KMK6	HN6	M5	4	M 30×1,5	41	45	9	5	2	36,5	35	0,060		
KMK7	HN7	M5	4	M 35×1,5	48	52	9	5	2	50	40	0,070		
KMK8	HN8	M6	8	M 40×1,5	53	58	11	6	2,5	62	67	0,11		
KMK9	HN9	M6	8	M 45×1,5	60	65	11	6	2,5	78	76	0,14		
KMK10	HN10	M6	8	M 50×1,5	65	70	13	6	2,5	91,5	84	0,18		
KMK11	HN11	M8	18	M 55×2	69	75	13	7	3	91,5	172	0,19		
KMK12	HN12	M8	18	M 60×2	74	80	13	7	3	95	188	0,20		
KMK13	HN13	M8	18	M 65×2	79	85	14	7	3	108	203	0,24		
KMK14	HN14	M8	18	M 70×2	85	92	14	8	3,5	118	219	0,28		
KMK15	HN15	M8	18	M 75×2	91	98	14	8	3,5	134	235	0,33		
KMK16	HN16	M8	18	M 80×2	98	105	18	8	3,5	173	378	0,45		
KMK17	HN17	M10	35	M 85×2	103	110	18	8	3,5	190	401	0,52		
KMK18	HN18	M10	35	M 90×2	112	120	18	10	4	216	425	0,65		
KMK19	HN19	M10	35	M 95×2	117	125	20	10	4	236	448	0,76		
KMK20	HN20	M10	35	M 100×2	122	130	20	10	4	255	472	0,80		